

Tissue FISH for Isis

Interphase FISH Signal Analysis in Tissue Sections

Empower

Automate Your TissueFISH Tasks On Your Isis System

Combine automated analysis features with manual and automated cell segmentation in tissues

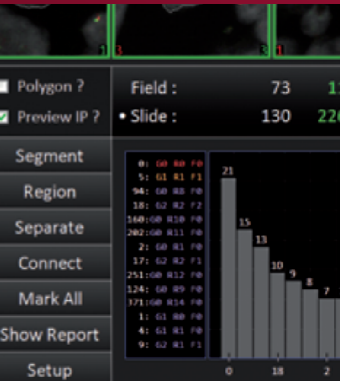
- Full spot counting functionality on any Isis fluorescence imaging system
- Automated image processing for easier identification of FISH signals
- Interactive or automated segmentation of cells for analysis
- Possibility to add a pen-driven display for even easier cell selection and cell segmentation
- Immediate and automated analysis of FISH signals with direct feedback of results (gallery display and histogram)
- Interactive editing of results, statistics and reports

TissueFISH:
Use the power of sophisticated algorithms to automate spot counting also in tissue sections - on your own Isis system!



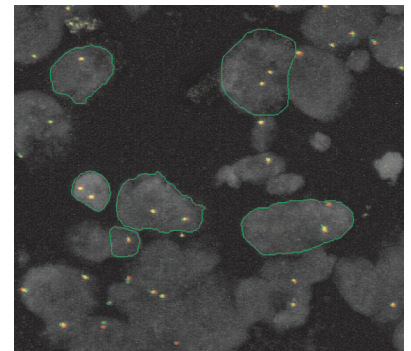
Tissue FISH for Isis

Interphase FISH Signal Analysis in Tissue Sections



The analysis of FISH signals in solid tissue sections requires special tools and methods. With **TissueFISH** MetaSystems offers a dedicated software module for this task. TissueFISH is available as an upgrade to any **Isis** fluorescence imaging system, and it is based on the powerful analysis engine of **MetaCyte**. The user interface supports either conventional mouse control or the optional interactive pen display.

Once images of selected regions in the tissue have been acquired in Isis, they can be directly loaded into the TissueFISH user interface. Cells of interest can be quickly selected with pen or mouse. On selection all FISH signals in the selected cell/nucleus are automatically analyzed. Results are shown together with a gallery image, thus offering the possibility to immediately check and eventually correct the data. The configurable data histogram is updated with each nucleus that is added to the gallery. After finishing analysis, data can be summarized and printed in a convenient, adaptable report. A toolkit of dedicated image processing operations offers the possibility to enhance the images prior to analysis.



Extend your Isis system with the innovative TissueFISH software to achieve precise and automated analysis of signals in tissue sections.

MetaSystems also develops and manufactures a broad range of FISH probes which are especially suited for tissue sections. For further details please contact MetaSystems or the MetaSystems representative in your country.

MetaSystems Worldwide

MetaSystems is proud to have a worldwide network of competent business and service partners. For inquiries please contact your local MetaSystems partner or one of the five MetaSystems offices in Germany, USA, Italy, India and Hong Kong.

MetaSystems Hard & Software GmbH (Headquarters)

Robert-Bosch-Str. 6, 68804 Altlußheim, Germany
tel +49 6205 396 10 | fax +49 6205 322 70 | info@metasystems.de

MetaSystems Group, Inc.

70 Bridge Street, Newton, MA 02458, USA
tel +1 6179 2499 50 | fax +1 6179 2499 54 | info@metasystems.org

MetaSystems S.r.l.

Via Gallarate 80, 20151 Milano, Italy
tel +39 0236 7587 51 | fax +39 0245 3753 03 | info@metasystems-italy.com

MetaSystems India Pvt., Ltd.

No. 1/1, 2nd Floor, 1st Main Rd., 2nd cross, Thimmaiah Garden, R T Nagar, Bangalore Karnataka, 560 032, India
tel +91 9535 7788 01 | info@metasystems-india.com

MetaSystems Asia Co., Ltd.

Unit 108, 1/F, Bio-Informatics Centre, No. 2 Science Park West Avenue, Hong Kong Science Park, Shatin, New Territories, Hong Kong
tel +852 2587 8333 | fax +852 2587 8334 | info@metasystems-asia.com