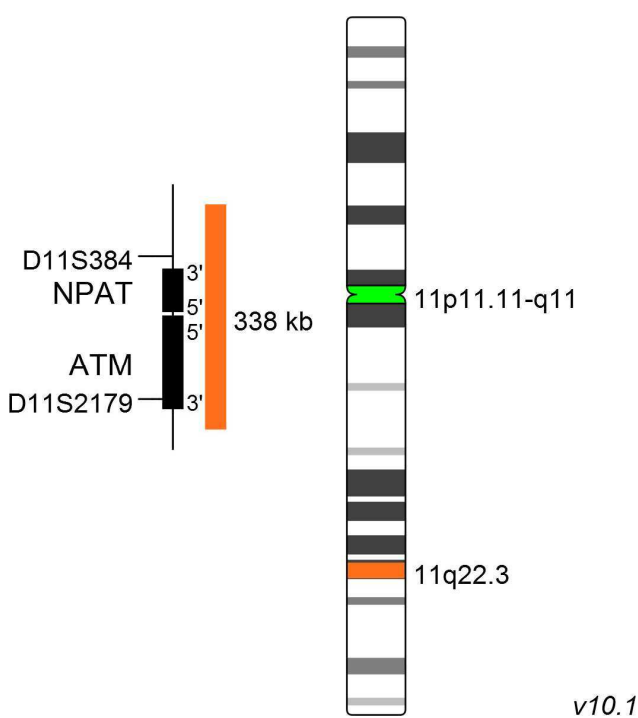


# XL ATM/11cen

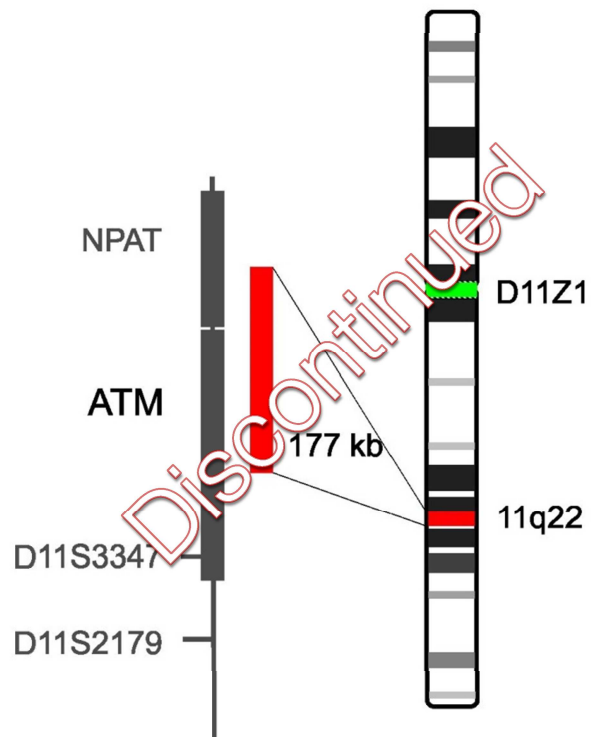
## Deletion Probe, Ref. Nr. D-5102-100-OG

The **XL ATM/11cen D-5102-100-OG** probe is a further development of the proven XL ATM D-5011-100-OG probe which will be discontinued. Like its predecessor, XL ATM/11cen detects deletions of the ataxia telangiectasia mutated (ATM) locus. Studies have shown that the minimal deleted region at 11q22.3 encompasses the ATM encoding region and is significantly larger than the region covered by XL ATM D-5011-100-OG. Consequently, in order to achieve brighter signals and thereby make the analysis more pleasant, we have increased the size of the new probe which is still far smaller than the minimal deleted region.

Chromosome 11q22.3-23.1 deletions involving the ATM locus are detected at diagnosis in up to 20 % of cases of B-cell chronic lymphocytic leukemia and are associated with a more aggressive disease.

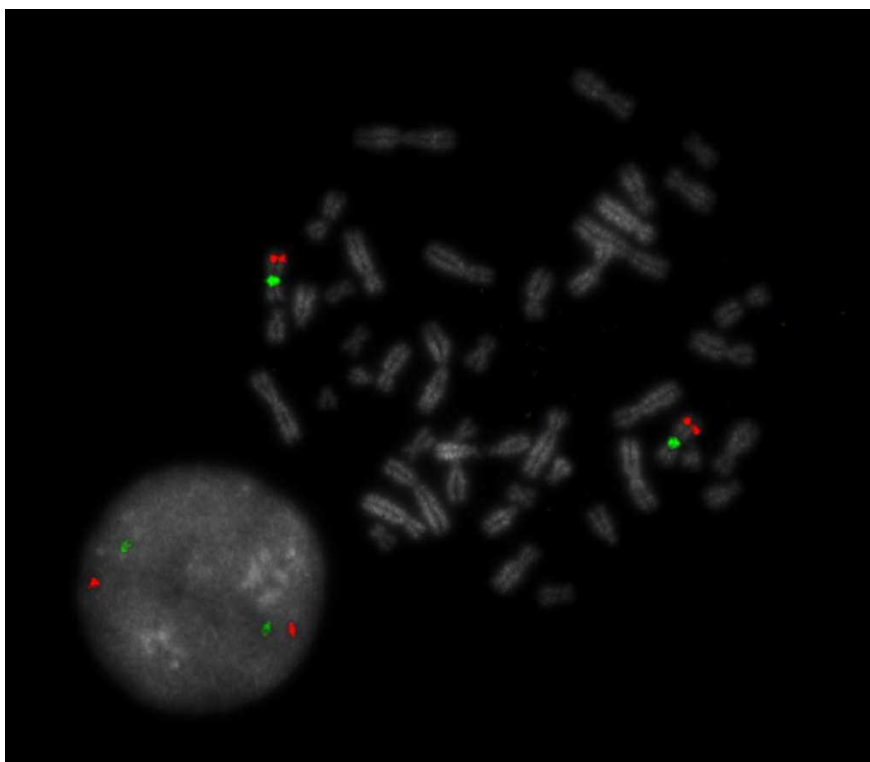


**XL ATM/11cen  
D-5102-100-OG**



**XL ATM  
D-5011-100-OG**

# FACT SHEET



XL ATM/11cen hybridized to lymphocytes. One normal interphase and metaphase are shown.

## Summary

---

### Clinical Applications:

- CLL

### Related Probes:

- XL ATM D-5011-100-OG *discontinued*

### Literature:

- Cuneo et al (2002) Haematologica 87:44-51
- Gunn et al (2009) Leukemia 23:1011-1017
- Gunnarsson et al (2011) Haematologica 96:1161-1169

# FACT SHEET

---