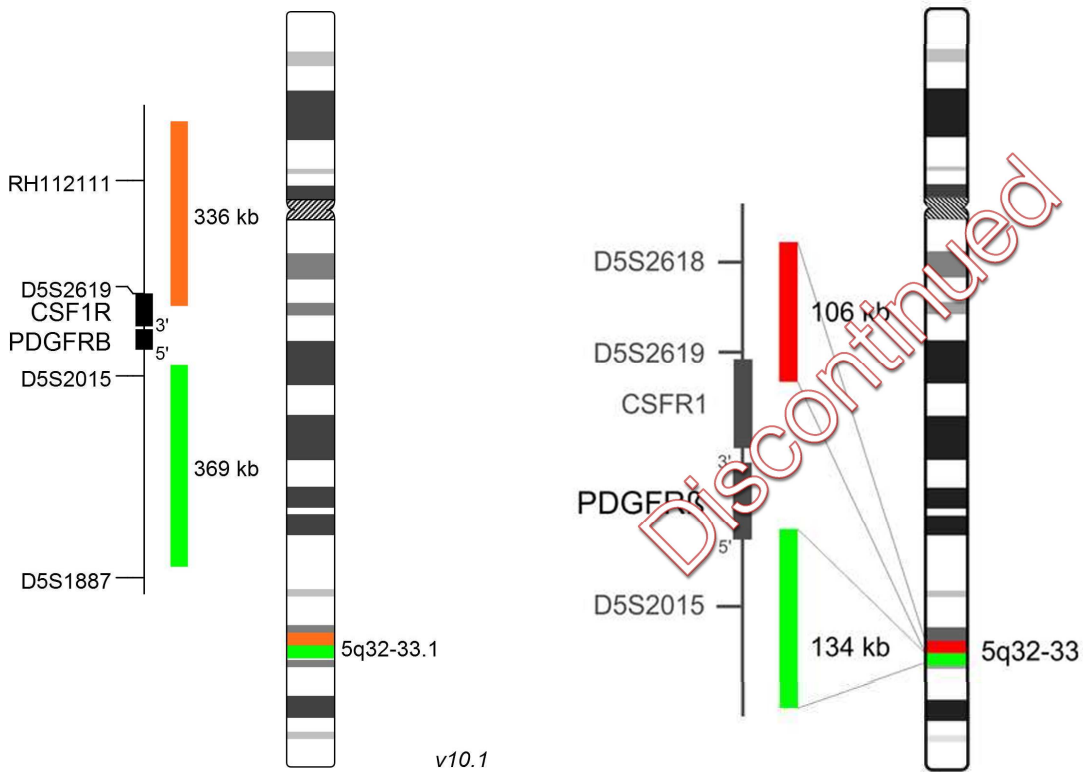


XL 5q32 PDGFRB BA

Break Apart Probe, Ref. No. D-5104-100-OG

We are introducing our new probe XL 5q32 PDGFRB BA which is replacing XL PDGFRB D-5031-100-OG. Like its predecessor, XL 5q32 PDGFRB BA is designed as a break apart probe with two probes juxtaposed and differently labeled. The probe located proximal to the PDGFRB locus at 5q32 is labeled in orange. A green labeled probe hybridizes distal to the breakpoint. The new design of XL 5q32 PDGFRB BA ensures an excellent performance with high intensity signals and low background. XL 5q32 PDGFRB BA is approved for 1h hybridization.

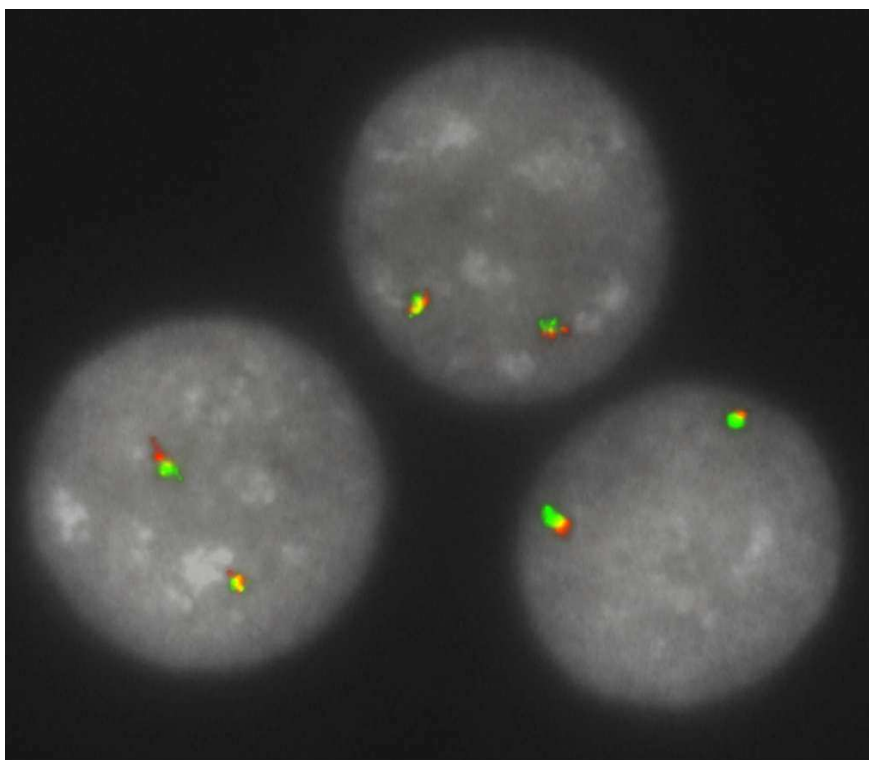
The updated (2016) World Health Organization (WHO) classification of tumors of the hematopoietic and lymphoid tissues indicates the category myeloid/lymphoid neoplasms with eosinophilia and rearrangement of PDGFRA, PDGFRB, FGFR1, or with PCM1-JAK2. Patients with neoplasms associated with PDGFRB fusions often respond to tyrosine kinase inhibitor therapy.



**XL 5q32 PDGFRB BA
D-5104-100-OG**

**XL PDGFRB
D-5031-100-OG**

FACT SHEET



XL 5q32 PDGFRB BA plus hybridized to lymphocytes. Three normal interphases are shown.

Summary

Clinical Applications:

- CML/MPN

Related Probes:

- XL PDGFRB D-5031-100-OG *discontinued*

Literature:

- Wlodarska et al (1997) Blood 89:1716-1722
- Apperley et al (2002) N Engl J Med 347:481-487
- Wilkinson et al (2003) Blood 102:4187-4190

FACT SHEET
